

Sacred Heart Chapel

Advanced lighting control
technology in religious
sanctuary

MEGAMAN®

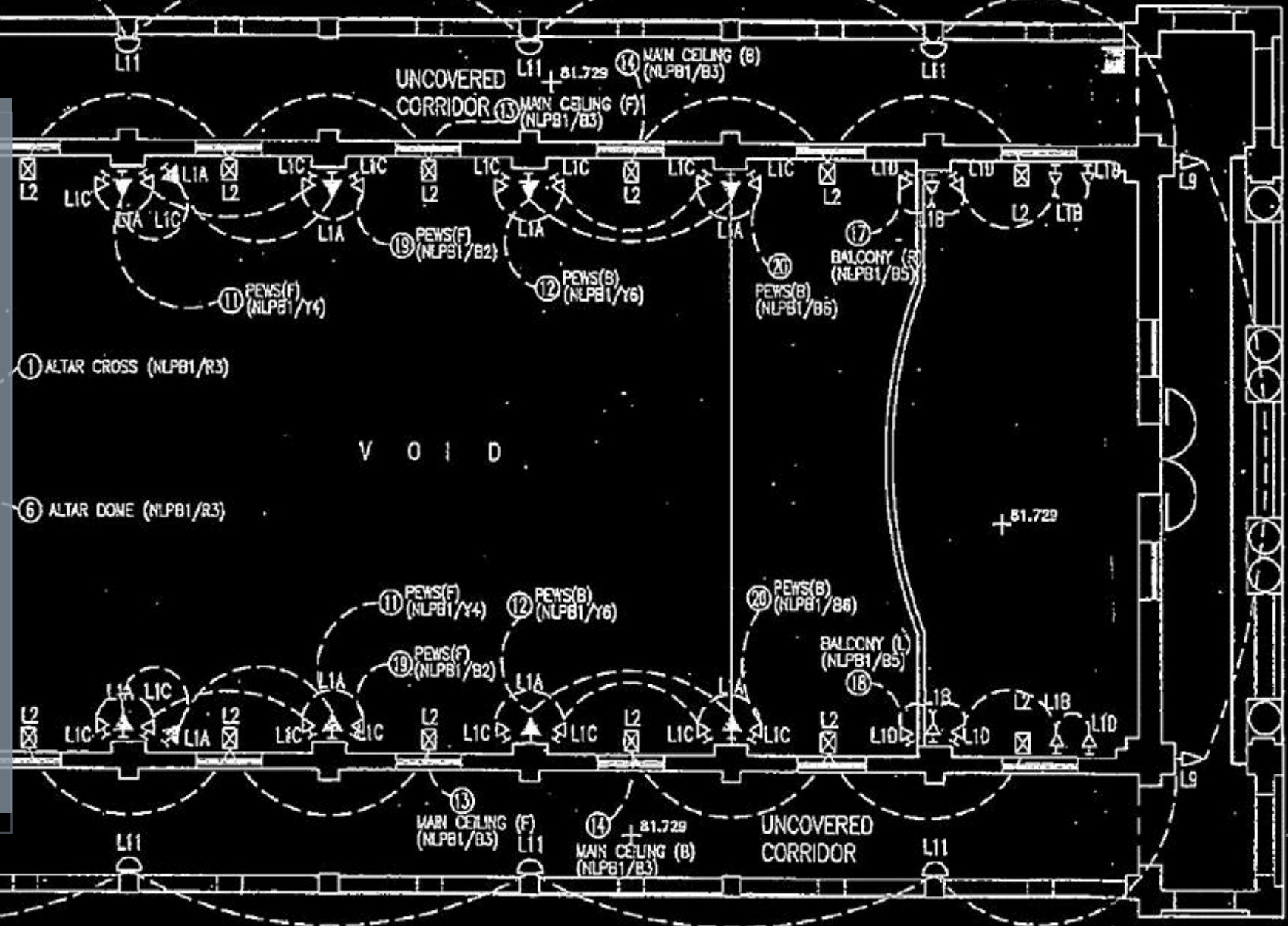
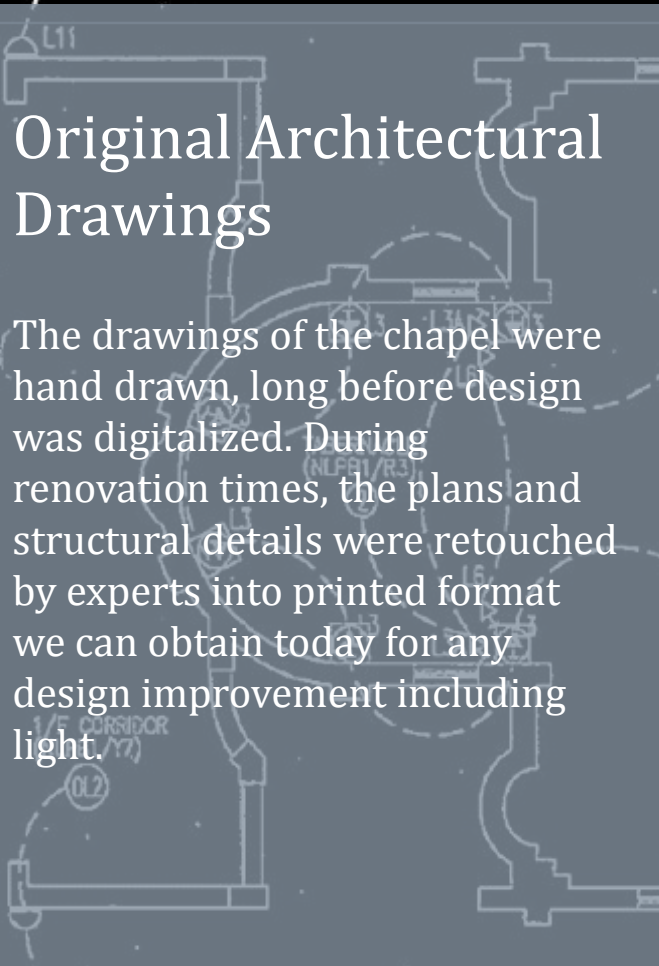
Sacred Heart Chapel, Hong Kong

Sacred Heart Chapel, Hong Kong had been established in the region for a century long history, built & managed by Canossian Daughters of Charity at the year 1907, & expanded twice at 1937 & 1980. Stands at 36 Caine Road, mid-level of Hong Kong Island, the chapel is enlisted as one of the rare Grade I historic buildings in Hong Kong.



Original Architectural Drawings

The drawings of the chapel were hand drawn, long before design was digitalized. During renovation times, the plans and structural details were retouched by experts into printed format we can obtain today for any design improvement including light.



MEZZANINE FLOOR LIGHTING LAYOUT PLAN

REMARK: ALL LIGHTINGS AS SHOWN SHALL BE MOUNTED AT 11/4" OR CEILING LEVEL UNLESS

Architectural features

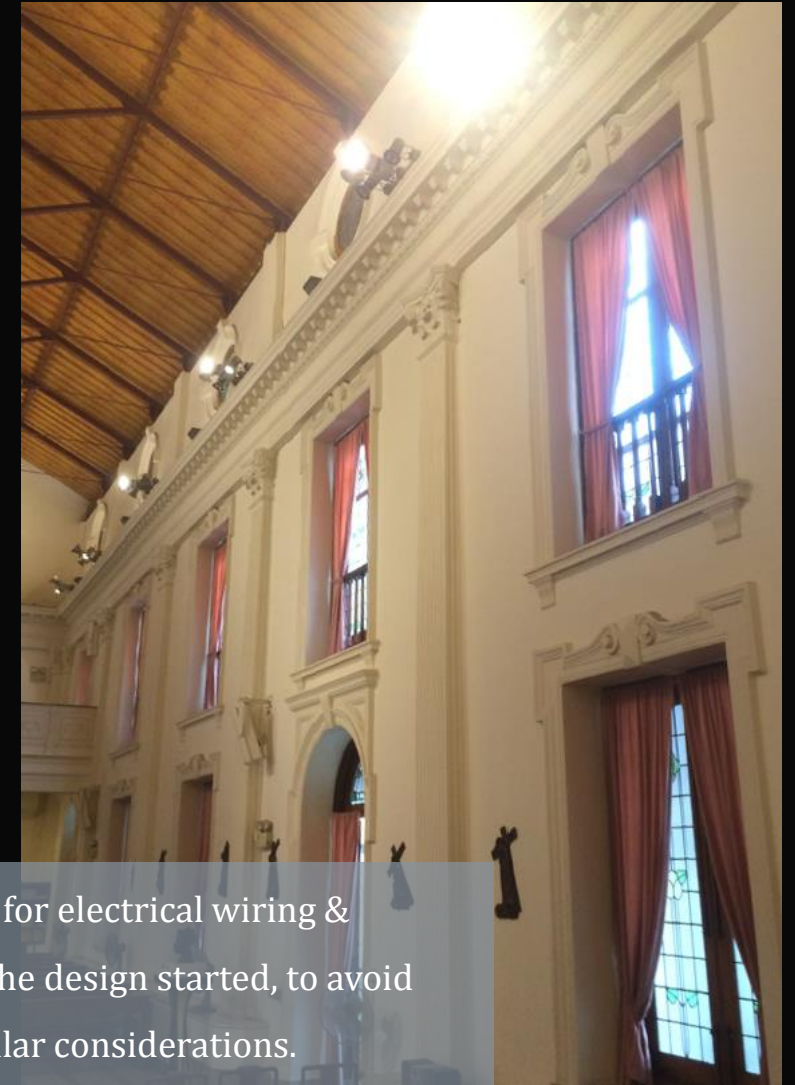
Through tinted glass & large apertures along the hallway, daylight had been the dominant source of illumination for the interior in daytime. For decades, illumination after dark had been a challenge especially with wide beam floodlight installed in both direct & indirect ways.



Besides the need to increase horizontal light level for evening assemblies, the new lighting design will reinterpret the interior look with improved visual priority, by highlighting architectural features including its gable roof & the alter with specific choices of Megaman luminaires.



Re-designing light



To preserve the original appearance of the chapel, there were serious constraints for electrical wiring & possible installation surfaces. The original lighting approach was studied before the design started, to avoid structural & cabling alterations, its 15 meters high gable roof was put into particular considerations.

Re-designing light

As a private section of the Canossian convent & its school, lighting will preserve the chapel's humble & practical atmosphere for its internal masses & regular purposes.



Despite an improved lumen output of luminaires were expected, cautious optic controls were demanded. All these were rendered via professional light simulation software to ensure a desirable & accurate outcome in terms of illuminance & luminance, general experience & a refreshing aesthetic perception.



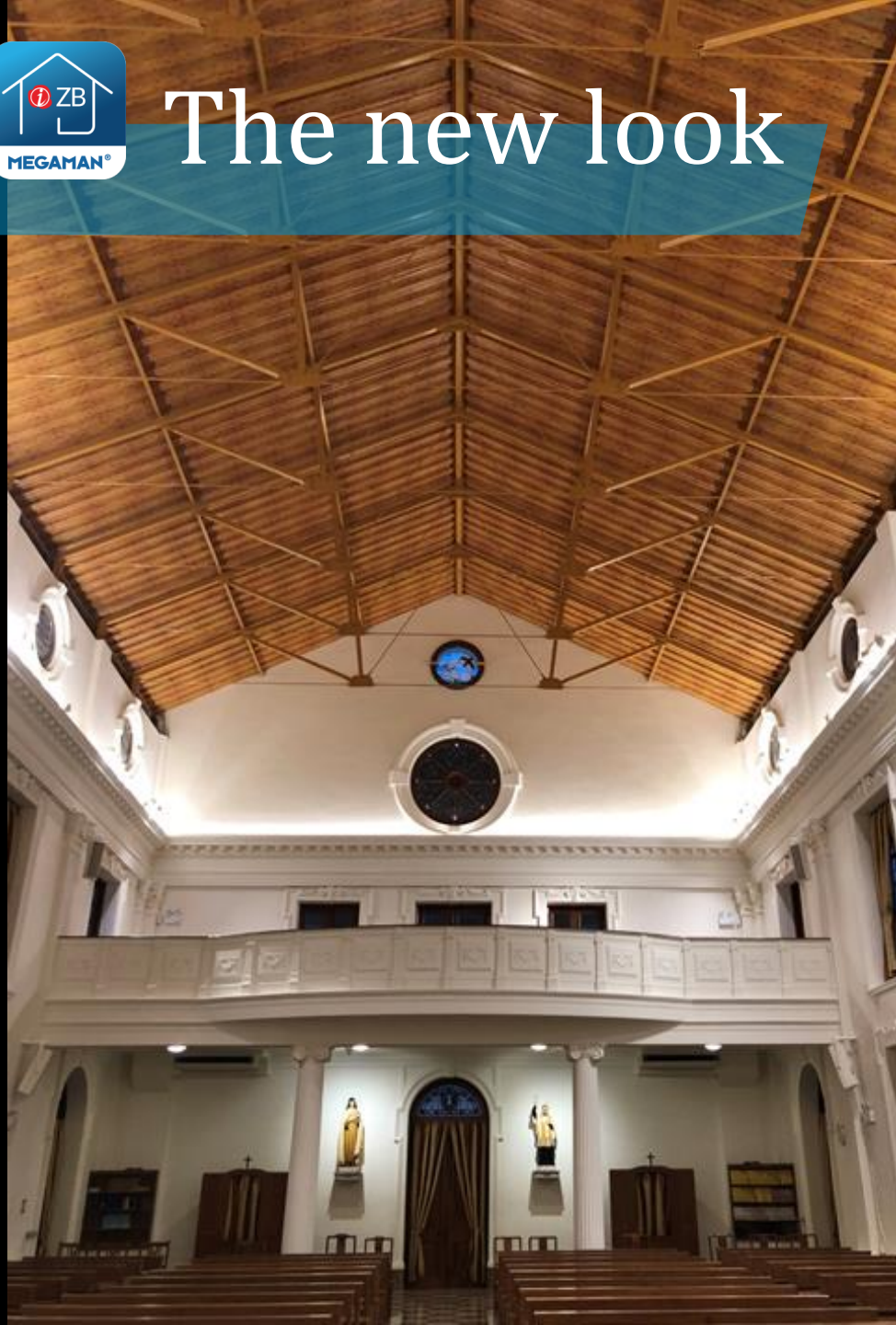
- 1 Linear lights were added behind columns to bring out aesthetic contrasts.
- 2 Spotlights at top of columns replaced with narrow beam luminaires target to the alter with modern look.

The new look





The new look



Linear washers with increased lumen are installed around the cornice creating a continuous light line forming a crown in the chapel, bringing out the roof colour real & alive. Reflected light from inclined surfaces lit the entire hall with highly uniform ambient light, where aesthetic visual contrasts were at the same time recognized.



The new look

An assorted use of wide & narrow beam spotlight are also added above the cornice to compensate illumination at reading level.





设计新貌



Halogen spotlights to the statues are now replaced with LED spotlights with better colour rendition & a slightly cooler colour temperature.





Zigbee智控系统

The Sacred Heart Chapel interior lighting renovation was seamlessly completed with Megaman's smart control technology, with the connection of the most popular smart commanding devices in the market like Alexa, Google or simply a tablet with the Megaman app installed, scene control is right in the palm of your hands.

MEGAMAN® smart lighting system INGENIUM® ZB was highly commended in the Lighting Product of the Year (Controls) category at the Electrical Industry Awards 2018.

A Megaman story

