

Case sharing

EXPLORING RGB LIGHTING

MEGAMAN[®] X AAAM ARCHITECTS

Client: HKMoA

城尋山水
山水



After major renovation, the Hong Kong Museum of Art (HKMoA) had reopened in November 2019, the new architectural planning connects the waterfront & public landscape among the area.

The shared courtyard between HKMoA, Space museum & K11 Atelier at the heart of Kowloon has now become a key element in the cultural landmark. Megaman is proud to taking part in light planning & supply to the modern sculpture trio created by Aaam Architects, together we gave life to a new landmark with light that warm the soul of everyday passersby.

經過重修的香港藝術博物館（HKMoA）於2019年11月重新開放，新的建築規劃接連了海濱和公共空間。

曼佳美有幸參與其中，為Aaam Architects創作的現代雕塑提供燈光支援和供應，為新地標帶來生命，為營營役役的路人添暖。



城尋



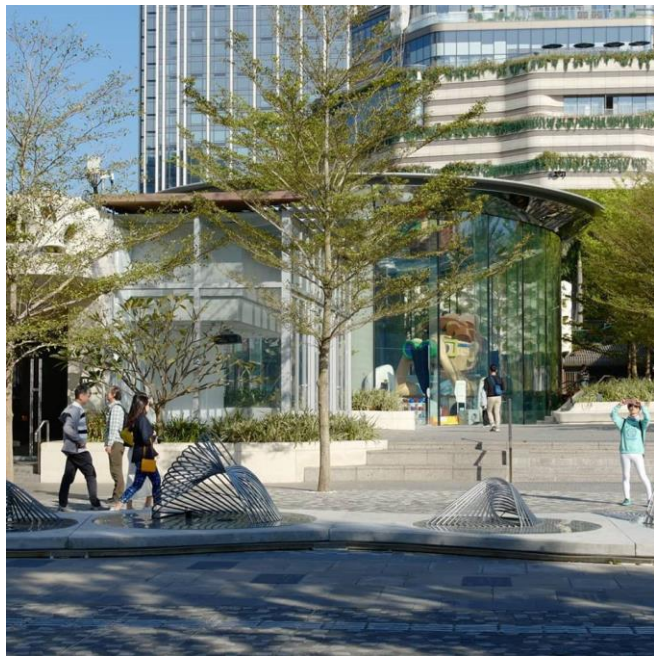
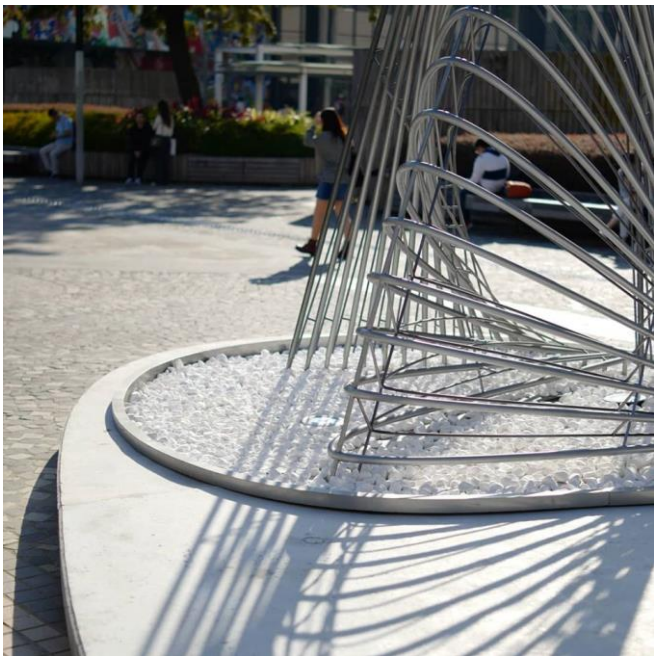
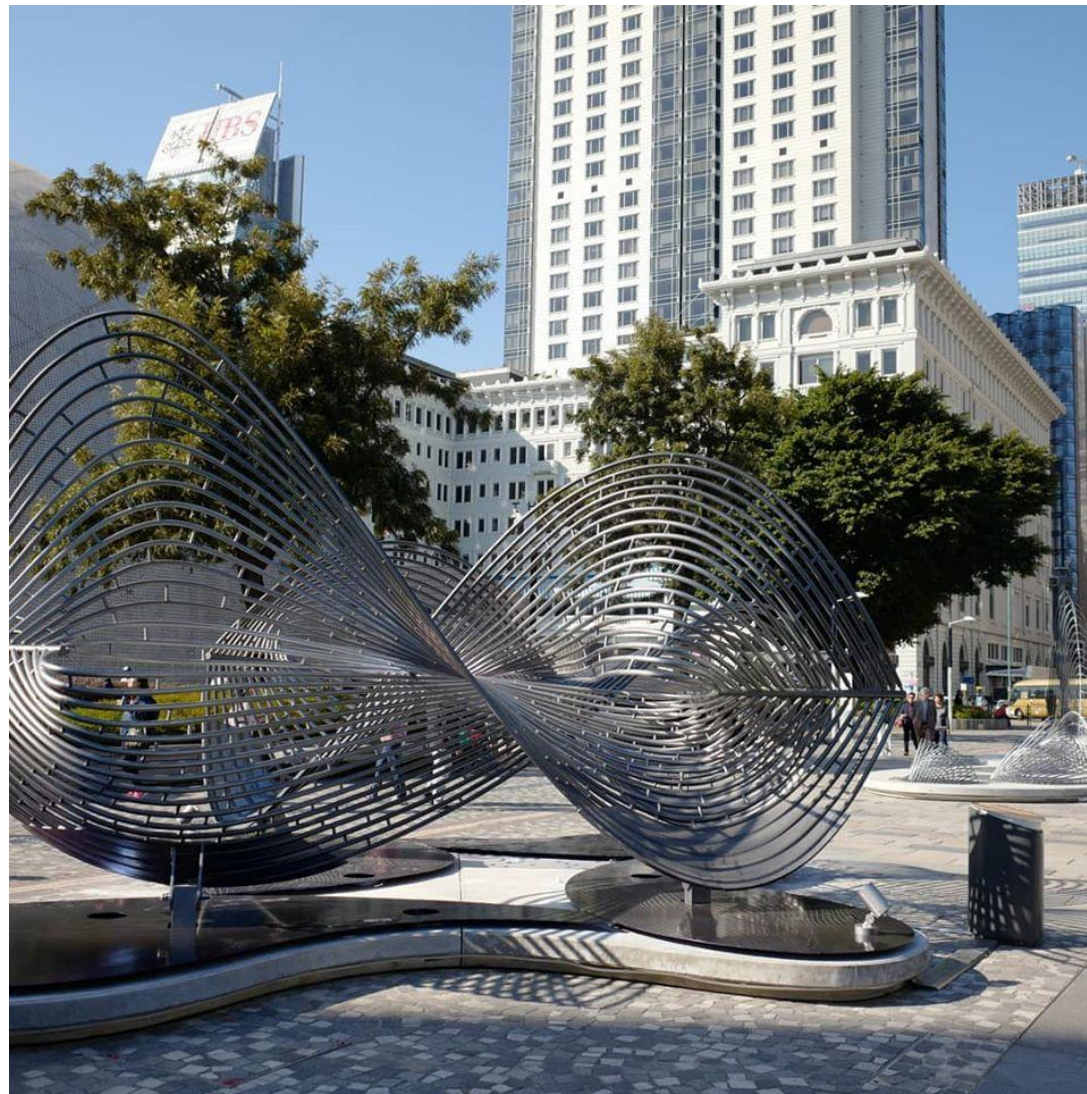
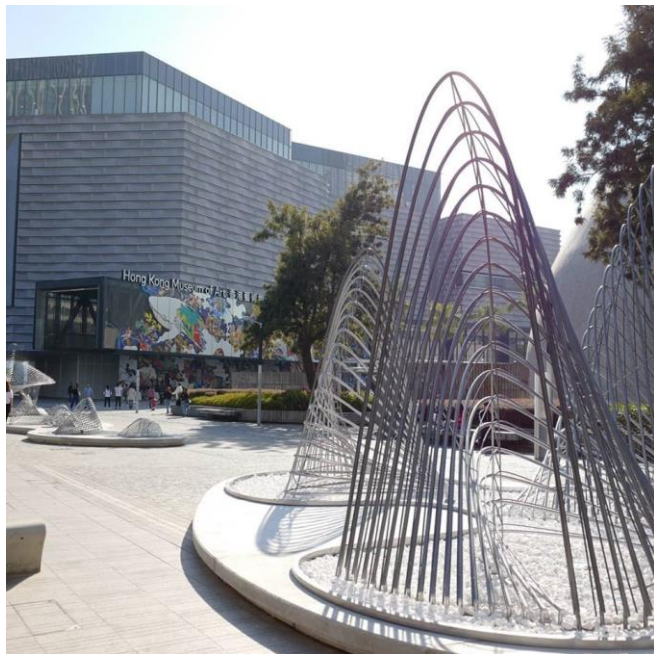
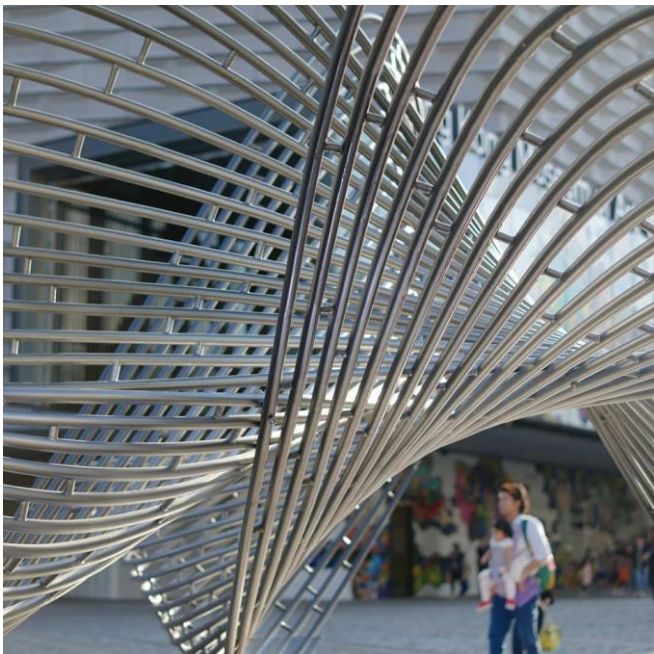
山水

Megaman has always been a reliable support to interior designs & architects, this is the first time partnering with the local architect team Aaam using light to bring their installations alive.

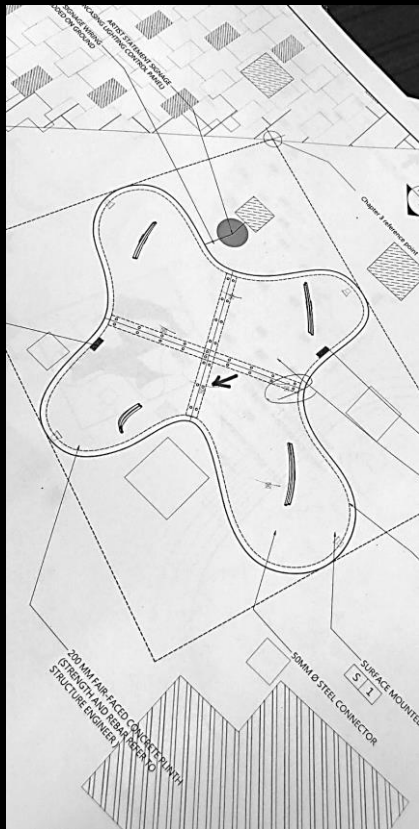
Lighting up art piece requires understanding to the design story, the artists had invited us to participate in their poetic journey to “Rediscovering landscape”, until we shared the emotion behind the art and be able to explore lighting possibilities for the art trilogy, an abstract three-chapter outdoor structure.

作為室內設計師和建築師的可靠後盾，曼佳美首度與本地建築師團隊Aaam合作，以燈光為裝置藝術添上生氣。

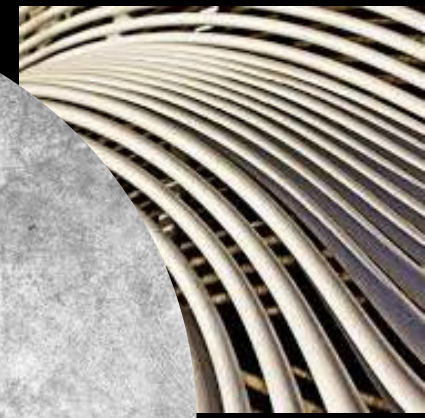
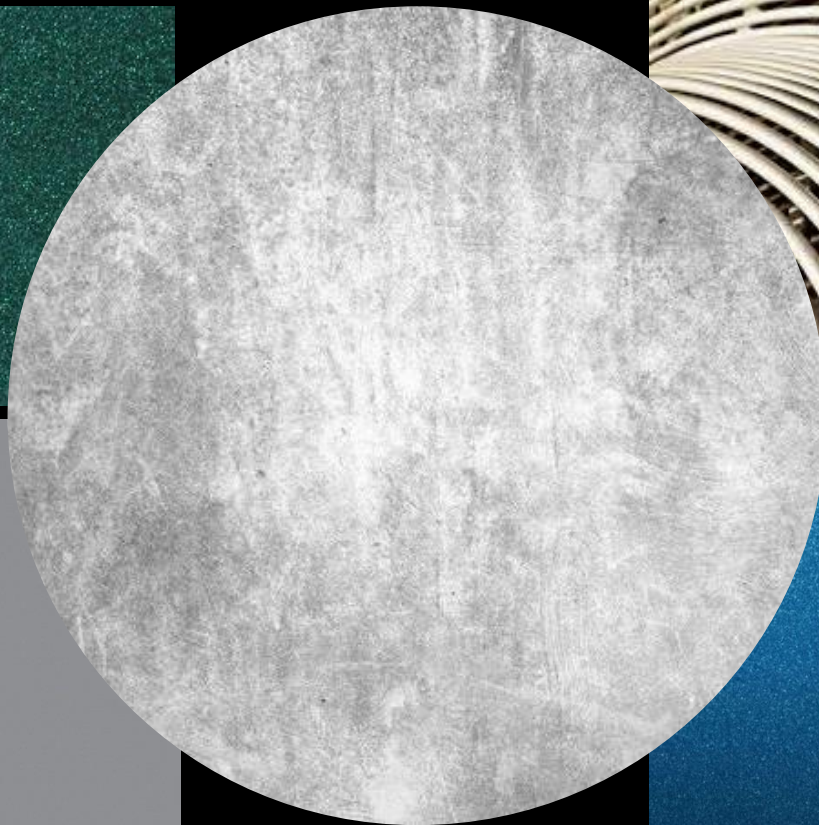
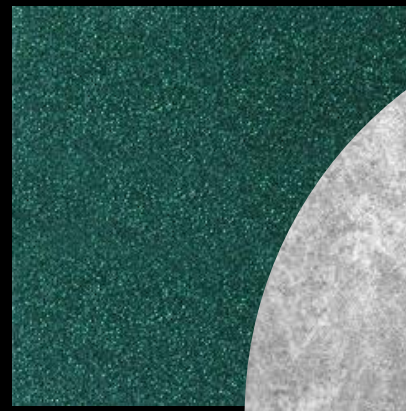
做藝術燈光，需先理解其設計故事，藝術家邀請曼佳美參與“城尋山水”的詩意之旅，繼而為這抽象的三部結構探索照明的可能性。



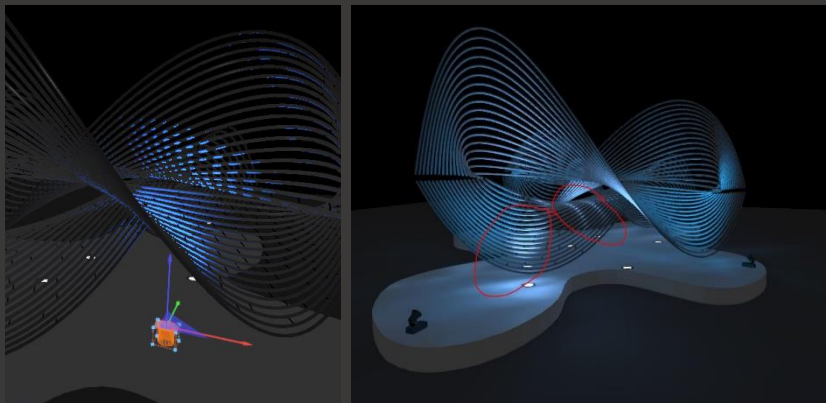
城尋山水
山水



Megaman worked along the architects advising on lighting intentions & product proposals, with consideration of material characteristic, colour reflectance, light point positions, on site lighting environment etc., Megaman team adopted those elements into lighting simulation, to ensure a realistic preview of the interspaced skeleton.

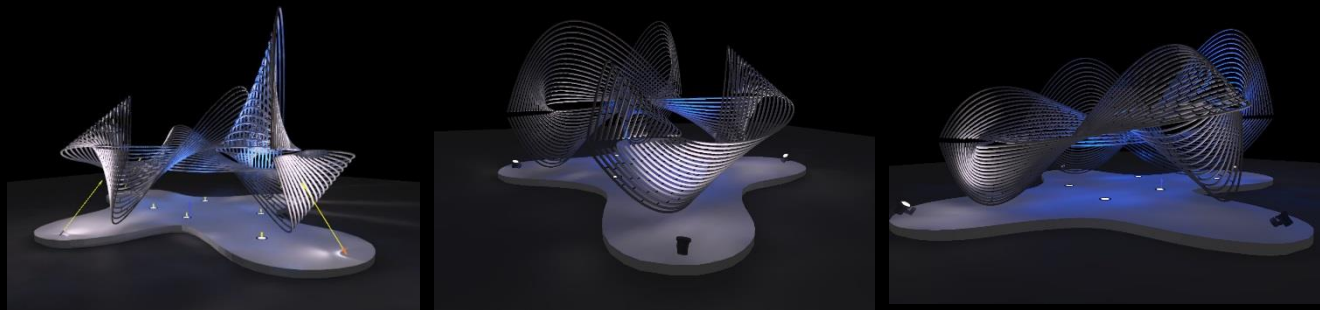
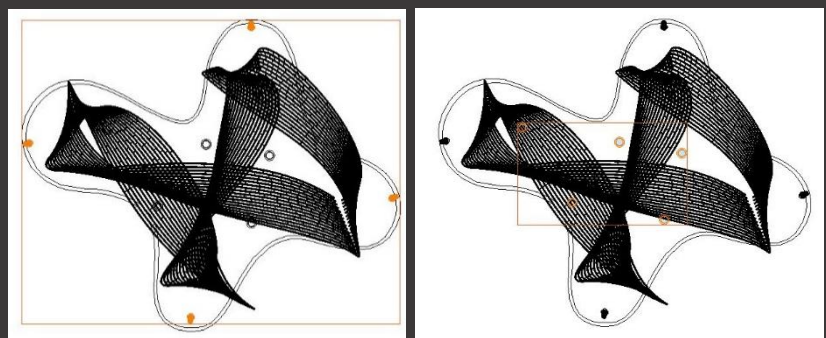
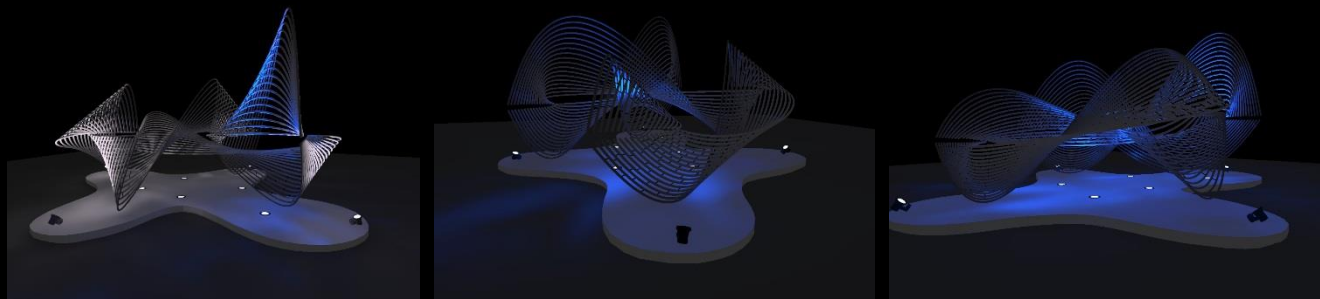
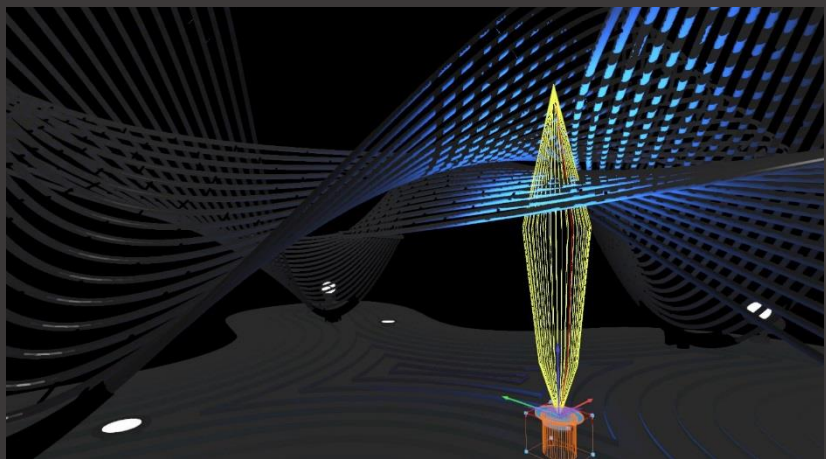


曼佳美與建築師同工，為設計意圖和產品提供諮詢，同時考慮到材料質特性，顏色反射率，光點位置，現場照明環境等。燈光團隊把這些元素以電腦模擬，務求把燈光和鏤空結構的交融率先體現。



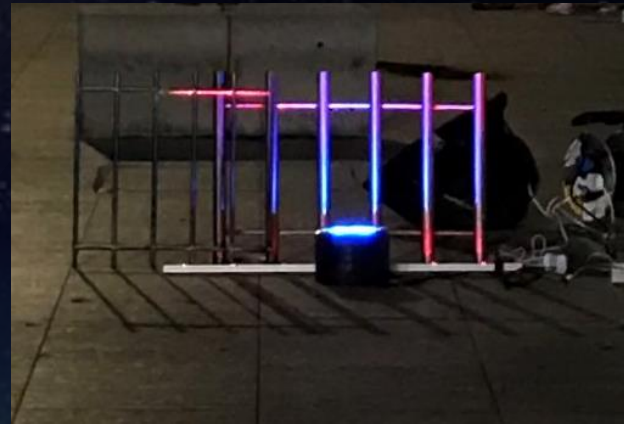
(LEFT) Simulation helped to target for unmistakable luminaire locations.
 (RIGHT) Optimal lighting effects for each unique skeleton were rendered according to time change, all these were essential for this particular project before actual casting of a heavy weigh cement platform.

(左) 模擬幫助確定照明設備位置，不容有失。
 (右) 嚴格的一步：根據其播放時間給個別骨骼進行照明渲染，務求獲得最佳光效，為鑄造水泥平台定準燈位。



The millions of hue created by RGB colour spectrum can provoke different emotions by perception of human eyes. A minor different of numerical definition is significant enough to a colour shift. Our lighting control expert & lighting designer worked onsite with the architects to define the desirable colours amid a vibrant lit ambience.

數百萬種色調可以透過RGB色譜生成，通過人眼感知激發不同的情感。RGB數值的微小差異改變改變色感。曼佳美的智控專家和照明設計師在現場與建築師合作，在耀眼的照明環境中為所需的顏色進行測試，微調和定義。



With the effort of all supporting teams, puzzle pieces got into position awaited for the light up, vibrant colours light will be ignited every 6pm to 11pm daily, changing according to time after dusk, glowing for the landmark.

多個月來整個團隊的共同努力下，各部分按設計藍本各就各位，互相緊接及時，等待亮燈的一刻，隨後每天黃昏六時到晚上11時，燈色會經過時間和節日演變，為這核心文化地標發光。



20:00

Blue

RGB Code: #0000FF



*Intelligence
Calmness
Trust
Confident*

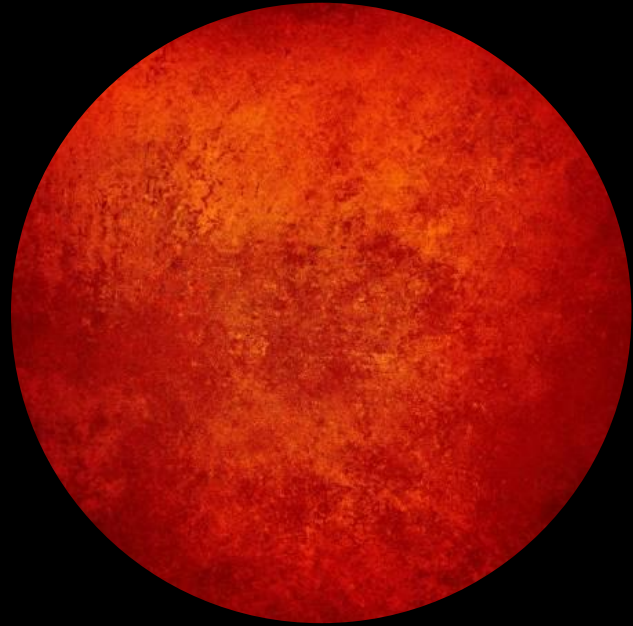


MEGAMAN®

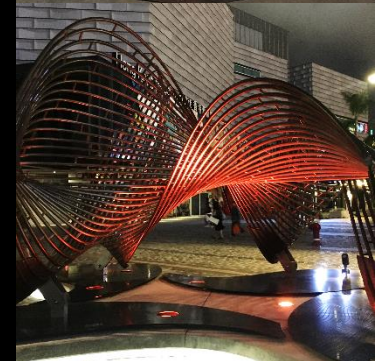
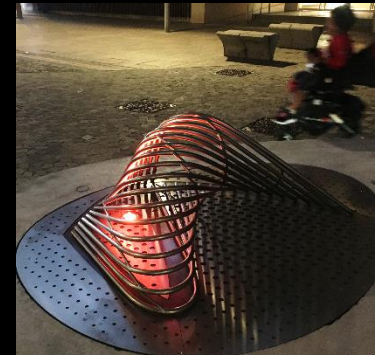
22:00

Burnt Orange

RGB Code: #CC5500



*Excitement
Passion
Attention
Curiosity*

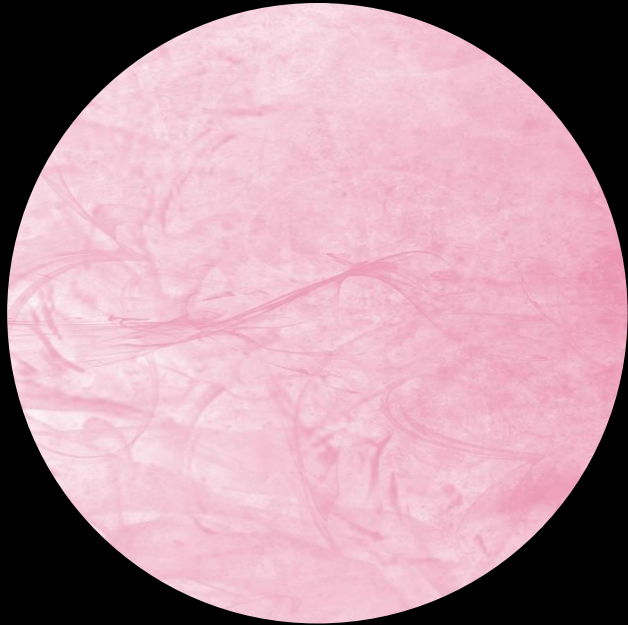


MEGAMAN®

FESTIVE

Lavender Rose

RGB Code: #FF94E9



*Compassion
Love
Admiration
Playfulness*



MEGAMAN®

A Megaman story

